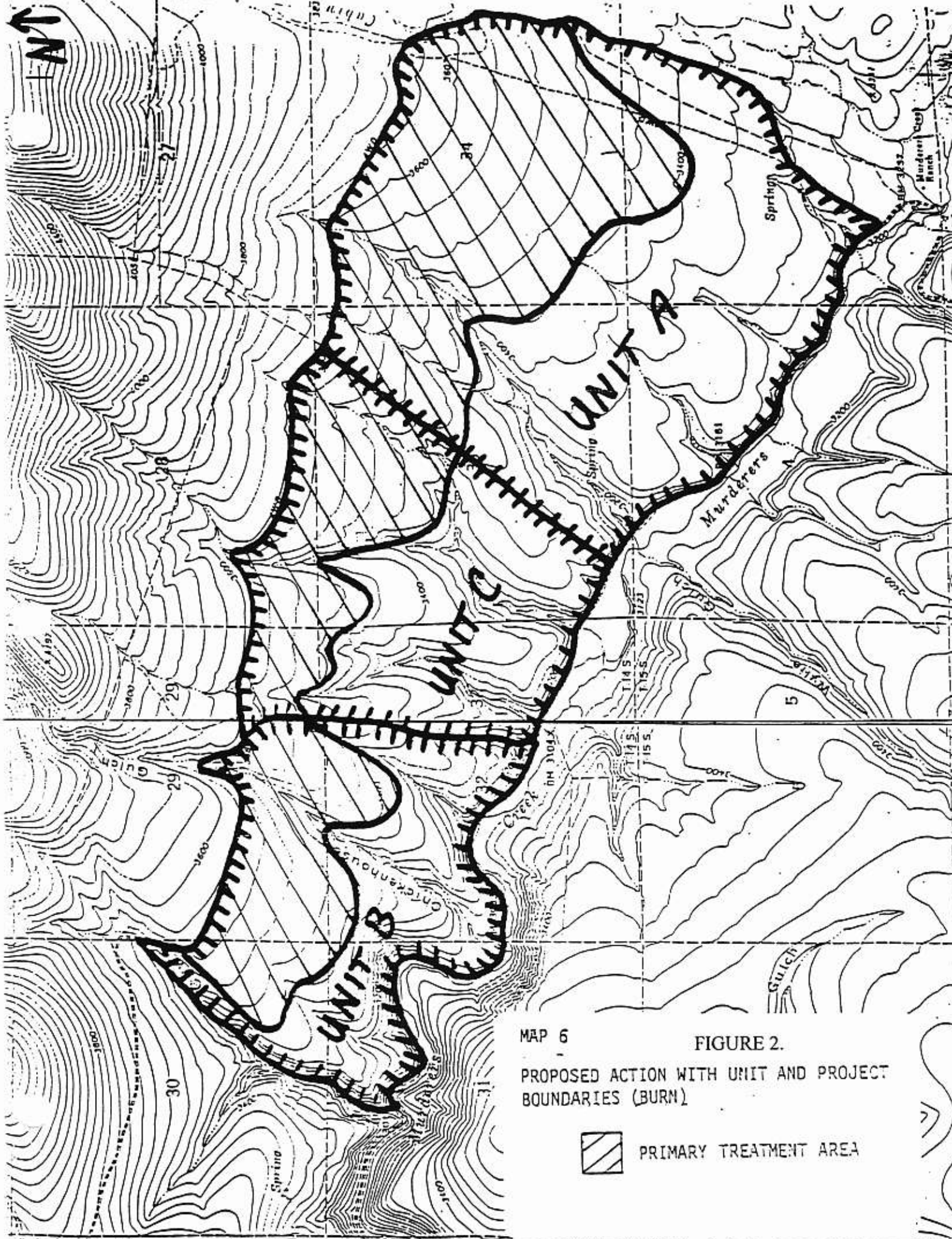


FIGURE 1. Original bluebird study sites established in 1989. MC is Murderers Creek which had 30 nest boxes. CG is Chickenhouse Gulch which had 40 nest boxes.



MAP 6

FIGURE 2.

PROPOSED ACTION WITH UNIT AND PROJECT BOUNDARIES (BURN)



PRIMARY TREATMENT AREA

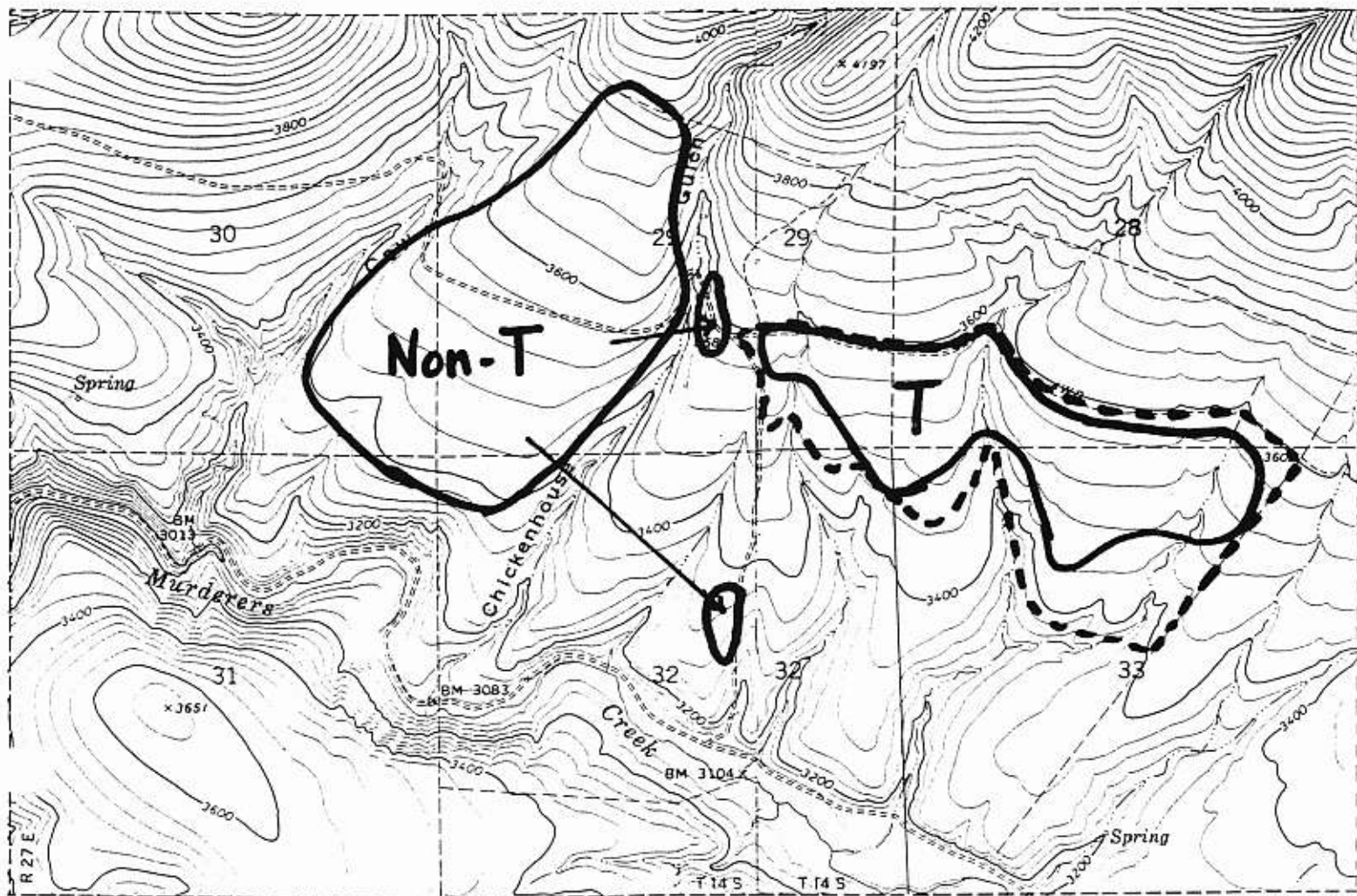


FIGURE 3. Bluebird study sites for 1997. T is the Treatment area, within the primary treatment area of Unit C (outlined by dashed line) within which herbicide spraying occurred in 1997, following burning in 1996 and previously. It had 23 nest boxes available to bluebirds. Non-T are the Non-Treatment areas, which were not sprayed in 1997 and had not been burned in 1996. They had 44 nest boxes available to bluebirds.